



What's Mt. Asahidake like?

Mt. Asahidake (2,291m), which is the tallest mountain in Hokkaido, is located in the Daisetsuzan Mountain Range. It is an active volcano that emits a great deal of smoke. Pretty alpine flora and wildlife, such as Ginzammashiko (pine Grosbeak) or Ezoshimarisu (*Tamias sibiricus lineatus*) can be seen around Sugatami-no-ike Pond and the Asahidake Onsen area, at the base of Mt. Asahidake. If you're lucky, you can hear the cry of Ezonakiusagi (Northern pika), which lives in very few areas of Hokkaido. On a clear day, you experience the vastness of the Daisetsuzan Mountain Range, with views of peaks such as Mt. Kurodake, and Mt. Tomuraushi, as well as the Tokachi Mountain Range.



Northern pika



Pine grosbeak

ACTIVITY Let's enjoy Mt. Asahidake!

There are many ways to enjoy the expansive nature of Mt. Asahidake.

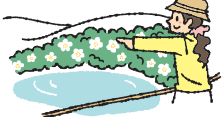
Hiking Mt. Asahidake

There is a trail to the summit from Sugatami station, which can be hiked in around two and half hours. Ohachidaira and Susoaidaira are popular courses that take around 8 to 9 hours.



Footpath around Sugatami-no-ike Pond

A 10-minute cable car ride takes you from Sanroku Station, at the base of the mountain, up to Sugatami Station, surrounded by a beautiful expanse of the alpine flora. Even inexperienced hikers can freely enjoy this beautiful nature footpath.



Skiing and Snowshoeing

Mt. Asahidake is the perfect place to enjoy skiing and snowshoeing, as it has the best powder snow in the world.



There is a cross-country ski and snowshoe rental service during the winter season.

ACCESS



Distance from Asahidake Visitor Center by car

Higashikawa Town Centre 30km
Asahikawa Airport 38km
Asahikawa Station 45km
Sapporo Station (via Do-o Expressway Asahikawa Kita IC) 190km

For visitors arriving by bus

[Shuttlebus Ideyugou 4 times a day from Asahikawa station- Asahikawa Airport- Higashikawa town centre- Asahidake 1 Hour 30min.]

Asahidake Visitor Center

Yukomanbetsu, Higashikawa Town, Kamikawa County, Hokkaido prefecture 071-1472
[TEL] 0166-97-2153 [FAX] 0166-97-2155
[OPEN] 9:00-17:00
[CLOSED] Year-end and New Year holidays
[HP] <https://www.asahidake-vc-2291.jp/>
[facebook] <https://www.facebook.com/asahidake/vc/>



HP



facebook

Admission Free

WiFi Free Wi-Fi



DAISETSUZAN NATIONAL PARK ASAHDAKE VISITOR CENTER



National
Parks
of Japan



Protecting and making the most of the beautiful nature of Daisetsuzan National Park.

The Asahidake Visitor Center offers various information, such as real-time hiking information, exhibits, lectures and information about the history and nature of Daisetsuzan National Park.

We offer special experience eco tours every year, which are conscious of the need to preserve resources, such as nature and culture in Higashikawa town and Daisetsuzan National Park.

The whole family can enjoy Asahidake Visitor Center and learn about the history and nature of Daisetsuzan National Park.

I recommend this hiking trail.

Oh, thank you!



You can see a topographical model showing the area from Mt. Asahidake to Tokachi Mountain Range at the visitor center which points out hiking courses and spots for taking beautiful photographs. It has the latest information you need for hiking.



EXPERIENCE Let's experience eco tours

Please contact us for details about the eco tours.

Mid Sep.

Autumn Leaves tours

Susoidaira is known as the first place in Japan for the foliage to turn colors in autumn.

It is a tour to experience the arrival of autumn and look for changes in nature. (fee-based service)



Available year-round

Guided photography hiking tours

Higashikawa Town is known as the "Town of Photography". Professional photographers can teach you how to take amazing pictures. (fee-based service)



LECTURE



When people learn about the mountain, they enjoy hiking more than before!

The nature and culture of the Daisetsuzan Mountain Range.

There is an exhibition of animals and plants specimen that lives in the Daisetsuzan Mountain Range, and the relationship between it and people, and information about which is the best time to see the flora and fauna.



Aleutian avens (late Jun.-Jul.)



Gentiana triflora var. japonica f. montana (Aug.-Sep.)

Information Desk

We will guide you to the famous tourist spots and nature in Asahidake Onsen and Tenninkyo Onsen areas. We will present ecotours and mountain guides to you.



What are eco tours?

Eco tours are programs based on the concept of conservation and learning, where one can experience local beauty while being conscious of preserving resources, such as nature and culture.

Tourists learn to understand the value and importance of the environment and the region, and link it to conservation.



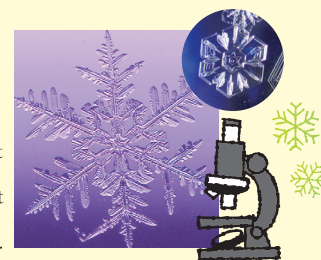
Limited to the Winter Season

Snow crystal observation

Around Mt. Asahidake, there are the most beautiful snow crystals in the world.

We offer the opportunity to observe different snow crystals under a microscope.

Pictures of the crystals are shown year-round.



We show short videos about the Daisetsuzan Mountain Range which explain the blessings of the pure water, the reason for the beautiful snow crystals, and about Mt. Asahidake, the active volcano.

There are also short lectures that last about 20 minutes, which teach hiking skills and knowledge, and about good practices and rules.



Lectures offered at the Visitor Center

Introduction on how to read the mountain maps.

We explain how to read the maps, compass directions, and indicate dangerous areas to watch out for.

Introduction to mountain weather.

We explain how mountain weather changes.

Introduction to hiking in the Daisetsuzan Mountain Range.

We explain how to safely hike in the current season, use plastic bags for toilet waste, the recommended proper equipment, and features of the Daisetsuzan Mountain Range.

Rest Corner



Higashikawa has a thriving woodworking industry. Please relax on this locally made furniture. Outside food is allowed.



All furniture is made in Higashikawa Town!